

DATASHEET

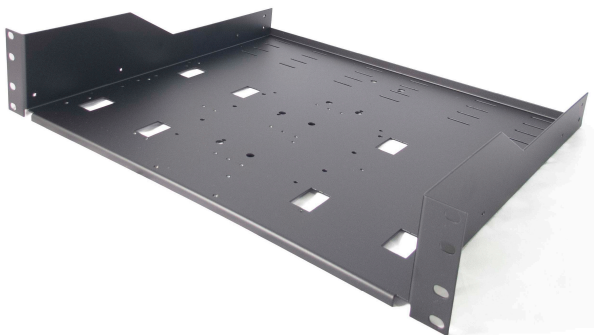
# COMSEC Uni-Shelf 2U

The **COMSEC Uni-Shelf (CS Uni2)** iGov Variant is a unique shelving solution that rigidly mounts various Type 1 COMSEC devices and IAS IP networking appliances within a standard 2U IT rack space.

The CS Uni2 is easy to use and affordable, allowing complete flexibility when configuring rack space. Its flexible design supports the retention of several different vendors' COMSEC products, IP networking appliances and the mixing and matching of various vendors' products. This allows organizations to simply inventory a single shelf and use it for several products/applications.

All necessary hardware (bolts & washers) required to retain the list of supported devices is included.

A CS Uni2 Strapping Kit is also available (sold separately). It is used to retain first generation KG-250s, KIV-7Ms, or KIV-19Ms (which all lack hard mounting points).



## Specifications:

- 5.0 lbs
- 12.0 x 16.9 x 2U LxWxH (inches)
- Black Semi-Gloss Powder Coat
- 14 Gauge Cold Rolled Steel
- 3 Year Warranty

## The COMSEC Uni-Shelf can be used to mix and match devices including:

- 1 KG-175D's and 1 KG-250X
- 1 KG-250X and 1 KG-175G
- 1 KG-175D and 1 KIV-7M
- 1 KIV-7M and 1 KG-250X

## The COMSEC Uni-Shelf retains:

- General Dynamics KG-175D (2 Total)
- General Dynamics KG-175G (1 Total)
- Viasat KG-250 / IPS-250 (2 Total)
- Viasat KG-250X / IPS-250X (3 Total)
- Viasat KG-250XS (3 Total)
- STEW
- CCESR-2C
- CCESR Smart Switch
- SND-A 2S
- UPS-500 (3 Total)