

DATASHEET

XBK-900

3G/4G Global Expeditionary Broadband Kit

Expeditionary Broadband Kits (XBKs) are small, lightweight, single person portable, mobile broadband communications solutions that support small, medium, and large teams of users who need remote Internet connectivity and access to voice, data, and video communications. Our XBKs offer VPN secured and unsecured Internet connectivity using public and private 3G and 4G cellular (including Verizon Frontline, and FirstNet public safety access LTE cellular service) and satellite communications technologies. They also provide local area network connectivity using 802.11 Wi-Fi and Ethernet.

SPECIFICATIONS

- Cradlepoint IBR900 wireless router
- 802.11ac Wi-Fi radio (up to 128 devices)
- 4G LTE Radio with Band 14 FirstNet
- (2) Gigabit Ethernet interfaces
- Field-proven AC/DC power UPS logic battery charging technology
- Can be paired up with military 2590 and/or PRC 148/152 batteries
- 20+ hours of runtime (with 2590 battery)
- Pelican V100 Rugged Vault case (colors available)
- Single, internal antenna
- 11" x 8" x 4.5" and <12 lbs.

BATTERY

- (2) USB Type A and (1) USB Type C connectors for charging mobile devices
- Can charge and provide power at the same time

POWER

- Wide range AC power input, removable AC power cord
- Wide range DC power input with cigarette lighter cord
- Variants that use and charge military inventory batteries (2590 and PRC152, or COTS batteries)

STORAGE

- Internal storage of AC/DC power cords and antennas



ANTENNA & CONNECTORS

- Single, internal antenna and power input connectors so unit can run when closed cellular/Wi-Fi antenna kit - self-contained kit that includes omnidirectional or directional Wi-Fi and cellular antennas in support of increase reception range.

Expeditionary Broadband Kits (XBKs) are small, lightweight, single person portable mobile broadband communications solutions.

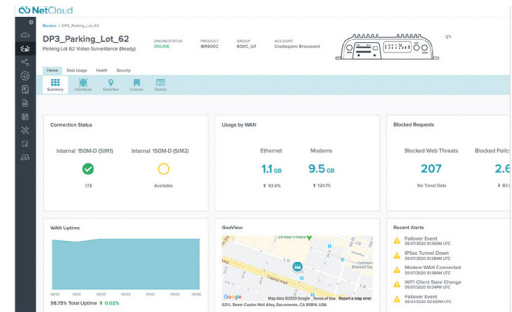
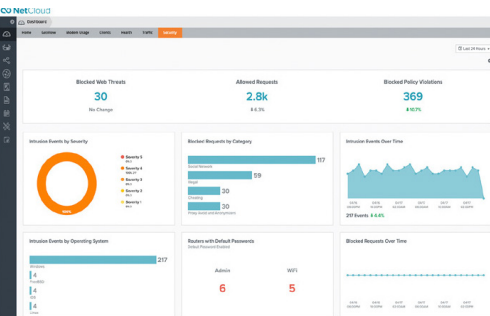
Cradlepoint NetCloud Service for the IBR900 provides everything needed to unlock the power of LTE.

Key Software Capabilities

Cradlepoint NetCloud Service for the IBR900 provides everything needed to unlock the power of LTE and connect vehicles, users, and IoT to critical applications and services. The available NetCloud IoT or Mobile service plans include the appropriate router software with powerful cloud management features for managing IoT at scale, or mobile-specific features like coverage maps, and application aware analytics. Everything within NetCloud works together, making it easy to deploy, connect, and secure edge applications at scale across the organization.

Router Services

Next generation hardware provides local processing power to handle demanding router-delivered services, such as support for VPN tunneling encryption including DMVPN, IPsec, GRE, and other tunneling technologies.

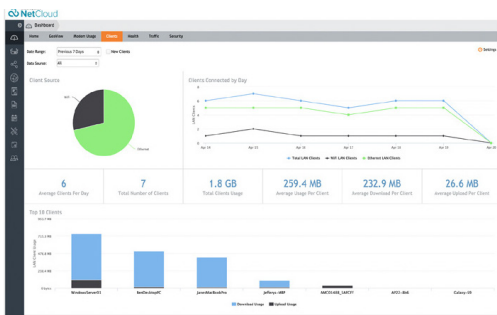
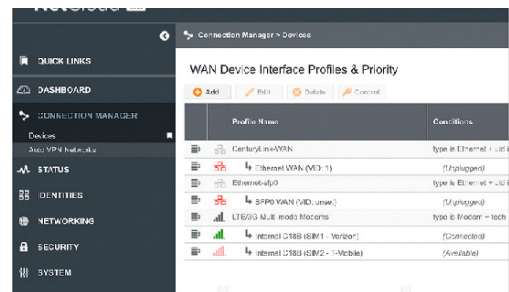


Security Services

NetCloud Service includes security features and options to optimize the IBR900 to meet the evolving security needs of mobile and IoT environments. The service includes stateful zone-based firewall with the ability to add application aware security policies with the Advanced Mobile service plan.

Connection Manager

Connection Manager provides the ability to manage all WAN connection types including wireless, Wi-Fi as WAN, and wired, from a single software-defined policy. Our custom-built modem software ensures users establish Wireless WAN connectivity faster while maintaining the highest level of resiliency.



Cloud Services

NetCloud Manager delivers true zero-touch deployment with the ability to define and deliver policy across entire groups of endpoints. Users can create a cloud-orchestrated hub and spoke VPN network and gain insights and analytics required for rapid troubleshooting and diagnostic workflows. Support operations with real time location services and vehicle information.